




Tour Length
10 Days / 9 Nights

Proposal for Martha Martha  ...

Adventure (Copy)

Dear Martha Martha,

Welcome to the world of unforgettable adventures! We are thrilled to offer you a personalized quote for our exclusive Adventure (Copy), designed to create the Africa experience of your dreams.

Our team has carefully crafted an itinerary that will take you on a journey filled with excitement, wonder and relaxation. From the moment you arrive in Bwindi Impenetrable National Park on (to be confirmed), you will be immersed in the beauty and splendor of Africa.

We have handpicked the best activities, accommodations and destinations to ensure that every moment of your safari is memorable. Please don't hesitate to contact us if you have any questions or require further assistance. We are here to help you make your African adventure a reality!

Thank you for considering us, and we look forward to hearing back from you soon.

Best regards,

Mandela Salim



Tsutsutours and travel
tsutsutours@gmail.com

Adventure (Copy)



Day by Day

See your full itinerary on [Page 5-20](#)

Day 1 Entebbe International Airport

Accommodation: Admas Grand Hotel

Meal Plan: Breakfast

Day 2 Ziwa Rhino and Wildlife Ranch

Accommodation: Murchison River Lodge

Meal Plan: Breakfast

Day 3 Murchison Falls National Park

Accommodation: Pakuba Safari Lodge

Meal Plan: Dinner

Day 4 Kibale National Park

Accommodation: The Bush Lodge (Banda)

Meal Plan: Breakfast

Day 5 Kibale National Park

Accommodation: Kibale Forest Lodge

Meal Plan: Breakfast

Day 6 Queen Elizabeth National Park

Accommodation: Queen Elizabeth Safari Lodge

Meal Plan: Breakfast

Highlights

- Bwindi Impenetrable National Park
- Queen Elizabeth National Park
- Murchison Falls National Park
- Kibale National Park

Day by Day

Continued from previous page

Day 7

Queen Elizabeth National Park

Accommodation: The Bush Lodge (Banda)

Meal Plan: Breakfast & Dinner

Day 8

Bwindi Impenetrable National Park

Accommodation: Gorilla Leisure Lodge

Meal Plan: Breakfast

Day 9

Lake Bunyonyi

Accommodation: Arcadia Lodge Lake Bunyonyi

Meal Plan: Breakfast

Day 10

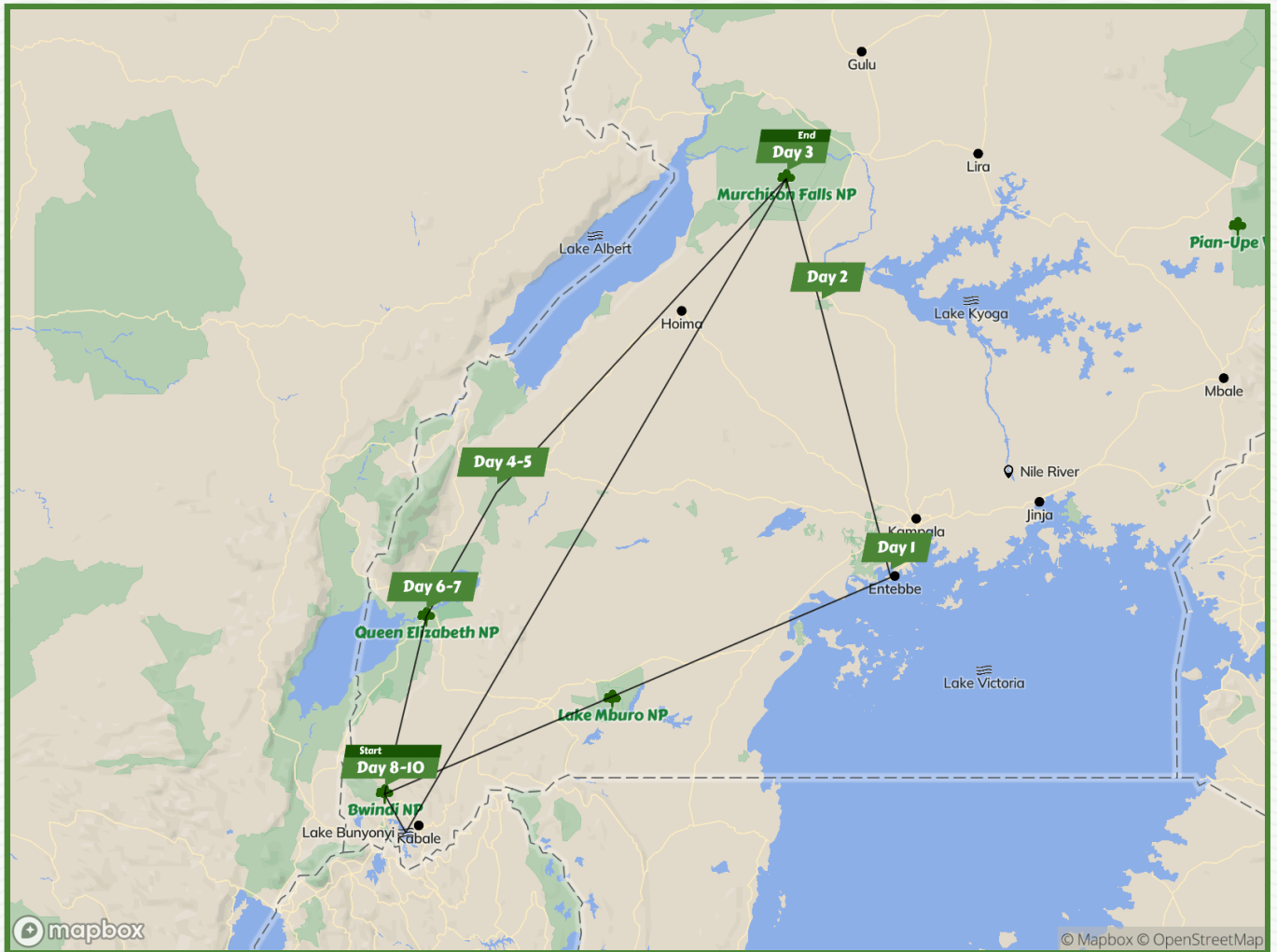
Lake Bunyonyi

Accommodation: No accommodation

Meal Plan: Breakfast

Optional: We can arrange additional accommodation after the tour ends.

An overview of your trip



Start Point Bwindi Impenetrable National Park

Day **Destination & Accommodation**

Day 1 **Entebbe International Airport** Admas Grand Hotel

Day 2 **Ziwa Rhino and Wildlife Ranch** Murchison River Lodge

Day 3 **Murchison Falls NP** Pakuba Safari Lodge

Day 4 **Kibale NP** The Bush Lodge (Banda)

Day 5 **Kibale NP** Kibale Forest Lodge

End Point Murchison Falls National Park

Day 6 **Queen Elizabeth NP** Queen Elizabeth Safari Lodge

Day 7 **Queen Elizabeth NP** The Bush Lodge (Banda)

Day 8 **Bwindi Impenetrable NP** Gorilla Leisure Lodge

Day 9 **Lake Bunyonyi** Arcadia Lodge Lake Bunyonyi

Day 10 **Lake Bunyonyi** (No accommodation)



Day 1

Entebbe International Airport

Accommodation

Admas Grand Hotel

The moment you've been waiting for has finally arrived: this is when your Ugandan safari begins. After a few brief formalities and an introduction to your guide, we'll start this journey together and begin to discover all of the amazing animals Uganda has to offer.

Activity Day 1

- You will be transferred from the airport in **Entebbe International Airport**.

Meal Plan – Day 1

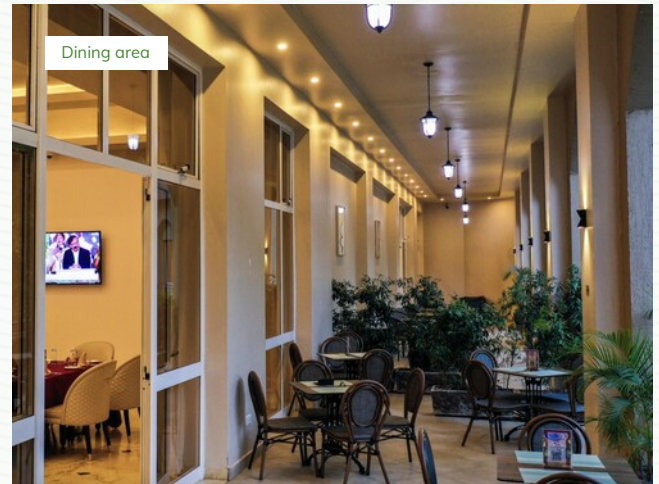
- Breakfast

Day 1

Accommodation **Admas Grand Hotel**

Hotel

When you stay at Admas Grand Hotel, you're in a good position to enjoy this leg of your trip.





Day 2

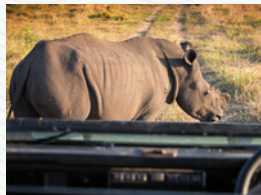
Ziwa Rhino and Wildlife Ranch

Accommodation
Murchison River Lodge

Situated 180km from Kampala alongside the main road to northern Uganda, Ziwa Rhino and Wildlife Ranch is a non-profit organization with the long-term goal of reintroducing white rhinos into national parks where they were last seen in the 1980s. It's a worthy venture, and deservedly supported by the Uganda Wildlife Authority, but also tremendous fun to visit. Not only does the sanctuary offer thrilling guided walks in search of Africa's second-largest non-marine animal, but you should also see various antelope and monkeys, and 300 bird species have been recorded.

Rhino tracking, Ziwa Rhino and Wildlife Ranch

Few wildlife-viewing activities are as exciting as tracking white rhinos in Ziwa Rhino and Wildlife Ranch. You'll probably use a combination of driving and walking to locate these prehistoric creatures. But once you find them, viewing usually takes place on foot. This means you'll get a really good feel for how huge Africa's second-largest land animal actually is. As you explore the ranch, you should also see plenty of antelope, monkeys and birds.



Activity Day 2

- Rhino tracking, Ziwa Rhino and Wildlife Ranch

Meal Plan – Day 2

- Breakfast



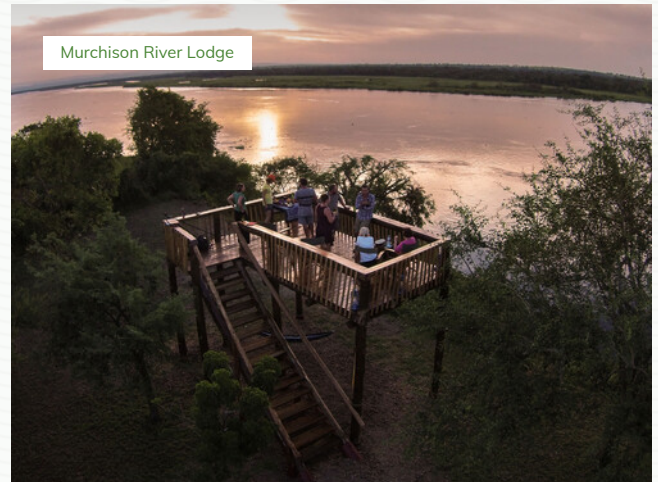
Ziwa Rhino and Wildlife Ranch

Day 2

Accommodation **Murchison River Lodge**

Lodge

You can look forward to a full-on bush experience at Murchison River Lodge, one of our favorite places to stay in Murchison Falls National Park. The riverside location and abundant natural vegetation ensure that plenty of birds and other wildlife can be seen in the large grounds of this well-run bush lodge, while amenities include en-suite accommodation, a shady thatched restaurant and a welcome swimming pool.





Day 3

Murchison Falls National Park

Accommodation
Pakuba Safari Lodge

Inside
Murchison Falls National Park

Named after an explosive 43m-high waterfall created where the Nile erupts through a crack in the Rift Valley escarpment, Murchison Falls National Park is also one of East Africa's most rewarding safari destinations. Here you'll find golden-maned lions stalking the plains, large herds of Rothschild's giraffe striding through palm-studded grassland, and hippos basking in the river shallows while elephants and buffaloes come to drink. A highlight of the park's prolific aquatic birdlife is the swamp-dwelling shoebills that are regularly seen around the delta formed by the Nile as it flows into Lake Albert.

Evening Game Drive

Going on an evening game drive is one of the highlights of any safari. This is when temperatures cool, the light becomes softer and the wildlife begins to get active. Not only will you be out when the light is best for taking photos, but it's also one of the best times of day for seeing the animals.



Murchison Falls National Park

Activity Day 3

Evening

- Evening Game Drive

Meal Plan – Day 3

- Dinner



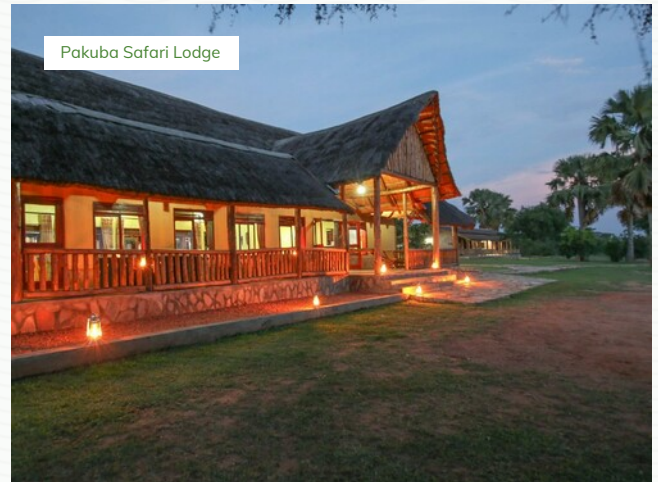
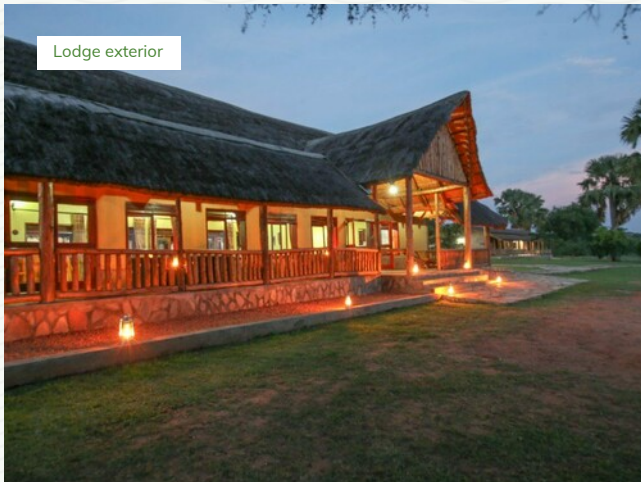
Murchison Falls National Park

Day 3

Accommodation **Pakuba Safari Lodge**

Lodge Inside Murchison Falls National Park

Our base in Murchison Falls is Pakuba Safari Lodge, which stands out for its isolated setting on the east bank of the Nile, 20km downstream from where it flows out of Lake Albert. No other lodge has a more convenient location for enjoying the wildlife action along the park's legendary Delta Circuit.





Day 4

Kibale National Park

Accommodation

The Bush Lodge (Banda)

Welcome to Kibale National Park, one of Uganda's most extensive and atmospheric protected rainforests. The forest interior here is rattling with wildlife, most notably a habituated community of chimpanzees, but also a wide variety of monkeys and colorful birds, and a small but elusive elephant population. Ask your guide to show you some of the many forest-fringed crater lakes that further enhance the scenic beauty of the national park and its environs.

Accommodation The Bush Lodge (Banda)

Lodge

Situated in dense scrub alive with birdsong on the bank of the Kazinga Channel, the Bush Lodge is the perfect base for exploring Queen Elizabeth National Park. The canvas-dominated bandas, set on stilted wooden platforms, combine good amenities with a back-to-nature feel. You can expect to see plenty of wildlife, including hippos, elephants and waterbuck.



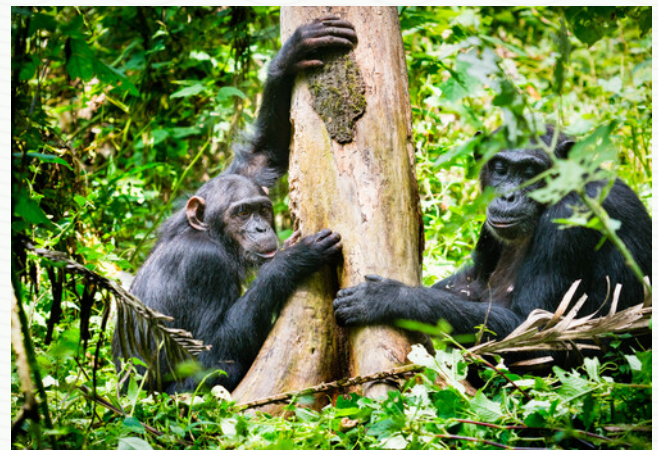
The Bush Lodge (Banda)

Activity Day 4

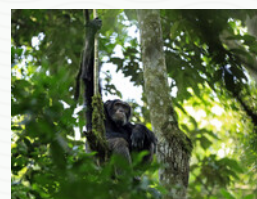
- Transfer by Road, Murchison Falls National Park to Kibale National Park

Meal Plan – Day 4

- Breakfast



Kibale National Park





Day 5

Kibale National Park

Accommodation
Kibale Forest Lodge

Just outside
Kibale National Park

We return to Kibale National Park, the primate capital of East Africa.

Chimp Trekking, Murchison Falls National Park

Come with us as we trek through the forest in search of chimpanzees. Once we find these remarkable primates, you'll share an extraordinary encounter with some of our closest relatives in the animal kingdom.

Activity Day 5

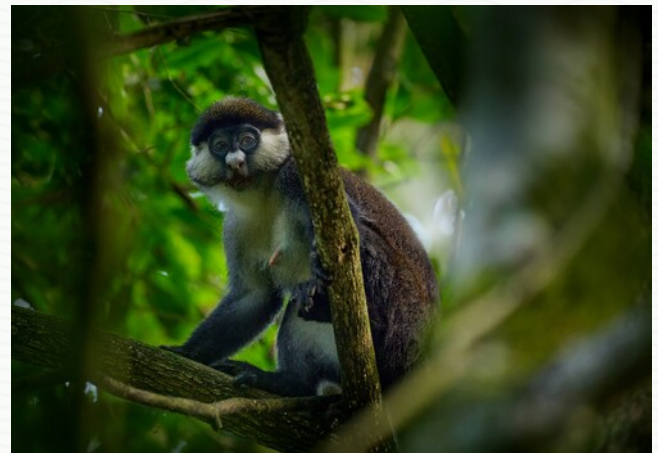
- Chimp Trekking, Murchison Falls National Park

Meal Plan – Day 5

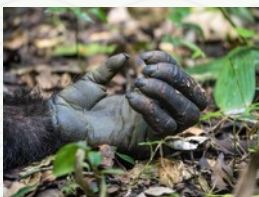
- Breakfast



Kibale National Park



Kibale National Park

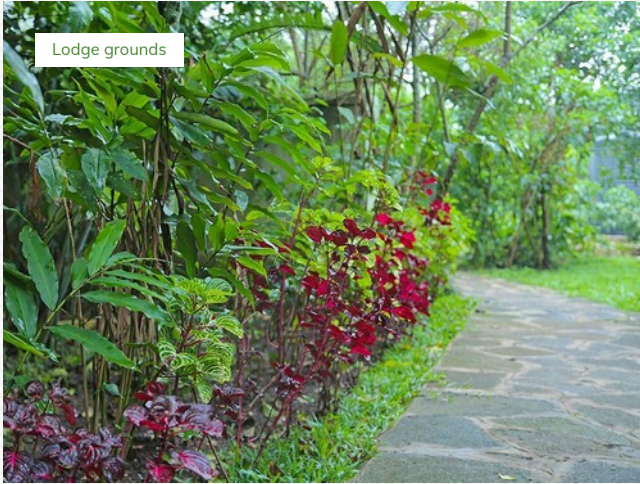


Day 5

Accommodation **Kibale Forest Lodge**

Lodge Just outside Kibale National Park

We think you'll enjoy the down-to-earth feel of Kibale Forest Lodge, which stands in the village of Bigodi practically bordering Kibale National Park. Owned and managed by a local husband-and-wife team known for their expertise as bird guides, this welcoming place started life as a simple homestay but it has gradually evolved into a proper lodge whose en-suite rooms now all have king-size beds, fitted nets and private balconies.





Day 6

Queen Elizabeth National Park

Accommodation

Queen Elizabeth Safari Lodge

Extending across a well-watered 1,978km² stretch of the Rift Valley floor, Queen Elizabeth National Park packs in a biodiversity that would be the envy of many far larger African conservation areas. Wildlife viewing is excellent. You can be confident of seeing hippo, elephant, buffalo, warthog and a variety of grazers including the handsome Uganda kob, which is the national antelope. This is also the most reliable park in Uganda for lions, the best place anywhere in Africa to look for the massive giant forest hog, and it boasts an astonishing checklist of 610 bird species, ranging from pelicans and flamingos to a host of colorful weavers and sunbirds.

Early Morning Game Drive, Queen Elizabeth National Park

Put on some warm clothes and enjoy an early morning game drive. This is the perfect time to experience the wildlife and the landscapes they inhabit. The light is soft and warm – perfect for photography – and most animals are out and about, and active. If you're not an early riser, you'll definitely want to make an exception here.



Activity Day 6

Early Morning

- Early Morning Game Drive, **Queen Elizabeth National Park**

Meal Plan – Day 6

- Breakfast



Queen Elizabeth National Park

Day 6

■ Accommodation **Queen Elizabeth Safari Lodge**

Lodge

Queen Elizabeth Safari Lodge is your base for exploring Queen Elizabeth National Park with us, and you'll really enjoy staying here.



Day 7

Queen Elizabeth National Park

Accommodation
The Bush Lodge (Banda)

Just outside
Queen Elizabeth National Park

You return to Queen Elizabeth National Park to further explore its rich biodiversity.

Accommodation **The Bush Lodge (Banda)**

Lodge Just outside Queen Elizabeth National Park

We return to the Bush Lodge, with its marvelous setting on the south bank of the Kazinga Channel opposite Queen Elizabeth National Park.



The Bush Lodge (Banda)



Activities **Day 7**

Evening

- We'll take you out on an evening game drive in **Queen Elizabeth National Park**. It's when temperatures cool, the light is golden and predators set out to hunt.
- Lion and leopard tracking, **Queen Elizabeth National Park**

Meal Plan – Day 7

- Breakfast & Dinner



Queen Elizabeth National Park



Day 8

Bwindi Impenetrable National Park

Accommodation
Gorilla Leisure Lodge

Bordering without fences
Bwindi Impenetrable National Park

Supporting almost half the world's mountain gorillas, Bwindi Impenetrable National Park is arguably the best place anywhere in the world to track these charismatic gentle giants through their misty forest home. But there is far more to this Unesco World Heritage Site than just gorillas. The lush forest interior is also home to a diversity of other mammals, ranging from L'Hoest's monkey and chimpanzee to elephant and the yellow-backed duiker. A total of 350 bird species, 23 of which are unique to the Albertine Rift Valley, ensure that Bwindi ranks among East Africa's most rewarding bird-watching destinations.

Mountain Gorilla Trekking, Bwindi Impenetrable National Park

When you go mountain gorilla trekking, you'll hike through the forest and then spend time in the presence of these remarkable and soulful family groups. The walking can be strenuous, but you'll never forget your experience here.



Bwindi Impenetrable National Park

Activity Day 8

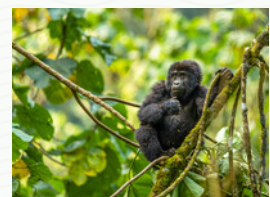
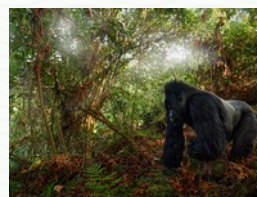
- Mountain Gorilla Trekking, **Bwindi Impenetrable National Park**
- Community tours

Meal Plan – Day 8

- Breakfast



Bwindi Impenetrable National Park

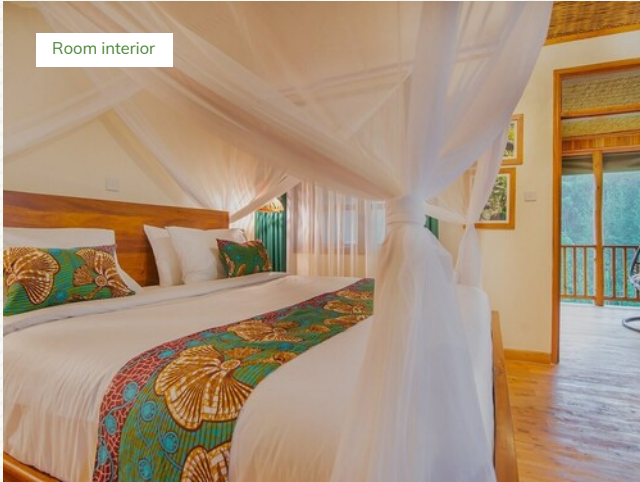


Day 8

Accommodation **Gorilla Leisure Lodge**

Lodge Bordering Bwindi Impenetrable National Park without fences

You'll appreciate being based at Gorilla Leisure Lodge for your visit to Bwindi Impenetrable National Park. It's a good place to return to at the end of your safari day.





Day 9

Lake Bunyonyi

Accommodation

Arcadia Lodge Lake Bunyonyi

Whether you're into kayaking between islands, hiking in the hills or chilling out on the beach, Lake Bunyonyi is a truly idyllic retreat. One of the few lakes in Uganda that's safe for swimming, thanks to the absence of hippos and crocodiles, Bunyonyi also lives up to its alluring name, which means 'Place of Little Birds'.

Accommodation Arcadia Lodge Lake Bunyonyi

Cottage

Settle into the private deck of your cottage at Arcadia Lodge Lake Bunyonyi to enjoy one of Uganda's most spectacular views, encompassing most of the namesake lake and many of its islands. Combining innovative modern architecture with an organic feel, the lodge's 25 cottages are set in flowering gardens that attract a great variety of birds.



Activity Day 9

- We've factored in some time for relaxing in **Lake Bunyonyi** to make sure that your safari is a holiday as well as an adventure.

Meal Plan – Day 9

- Breakfast



Lake Bunyonyi





Day 10

Lake Bunyonyi

We return to the relaxing surrounds of Lake Bunyonyi.

We have no doubt that you have enjoyed an incredible safari in Uganda, but sadly it now comes to an end. We wish you a safe onward journey and look forward to seeing you again next time you go on safari.



Activity Day 10

- We will transfer you to the airport.

Meal Plan – Day 10

- Breakfast

Pricing

Proposal for Martha Martha

Tour Length

10 Days / 9 Nights

Travelers

...

Monthly

40% before and 60%

Included

- All activities, unless indicated as optional
- Meals (As specified in the day-by-day section)
- Taxes / VAT

Excluded

- International flights
- Personal items (Souvenirs, travel insurance, visa fees, etc.)
- Tips (Tipping guideline US\$10.00 pp per day)
- Government imposed increase of taxes and/or park fees



About Us

TsuTsu tours and travel

Contact Us

Email tsutsutours@gmail.com

Website tsutsutours.com



**“Live life with no excuses,
travel with no regret”**

Oscar Wilde

Colofon

Copyright Text Tsutsutours and travel & SafariOffice

Copyright Images SafariBookings.com, Ariadne Van Zandbergen, Rod Waddington, USAID Biodiversity & Forestry,
Tsutsutours and travel & SafariOffice
[View](#) copyright per photographer

Mandela Salim from Tsutsutours and travel used the SafariOffice App to create this unique proposal especially for you.