



Tour Length  
6 Days



Proposal for Martha  ...

# Adventure

**Dear Martha,**

Welcome to the world of unforgettable adventures! We are thrilled to offer you a personalized quote for our exclusive Adventure , designed to create the Africa experience of your dreams.

Our team has carefully crafted an itinerary that will take you on a journey filled with excitement, wonder and relaxation. From the moment you arrive in Bwindi Impenetrable National Park on (to be confirmed), you will be immersed in the beauty and splendor of Africa.

We have handpicked the best activities, accommodations and destinations to ensure that every moment of your safari is memorable. Please don't hesitate to contact us if you have any questions or require further assistance. We are here to help you make your African adventure a reality!

Thank you for considering us, and we look forward to hearing back from you soon.

Best regards,

Mandela Salim



Tsutsutours and travel  
tsutsutours@gmail.com

# Adventure



## Day by Day

See your full itinerary on [Page 4–12](#)

### Day 1

#### Bwindi Impenetrable National Park

**Accommodation:** Gorilla Leisure Lodge

**Meal Plan:** Breakfast

### Day 2

#### Bwindi Impenetrable National Park

**Accommodation:** Gorilla Leisure Lodge

**Meal Plan:** Breakfast

### Day 3

#### Bwindi Impenetrable National Park

**Accommodation:** Queen Elizabeth Safari Lodge

**Meal Plan:** Dinner

### Day 4

#### Queen Elizabeth National Park

**Accommodation:** The Bush Lodge (Banda)

**Meal Plan:** Breakfast

### Day 5

#### Kibale National Park

**Accommodation:** Kibale Forest Lodge

**Meal Plan:** Breakfast

### Day 6

#### Murchison Falls National Park

**Accommodation:** Murchison River Lodge

**Meal Plan:** Breakfast

**Optional:** We can arrange additional accommodation after the tour ends.

## Highlights

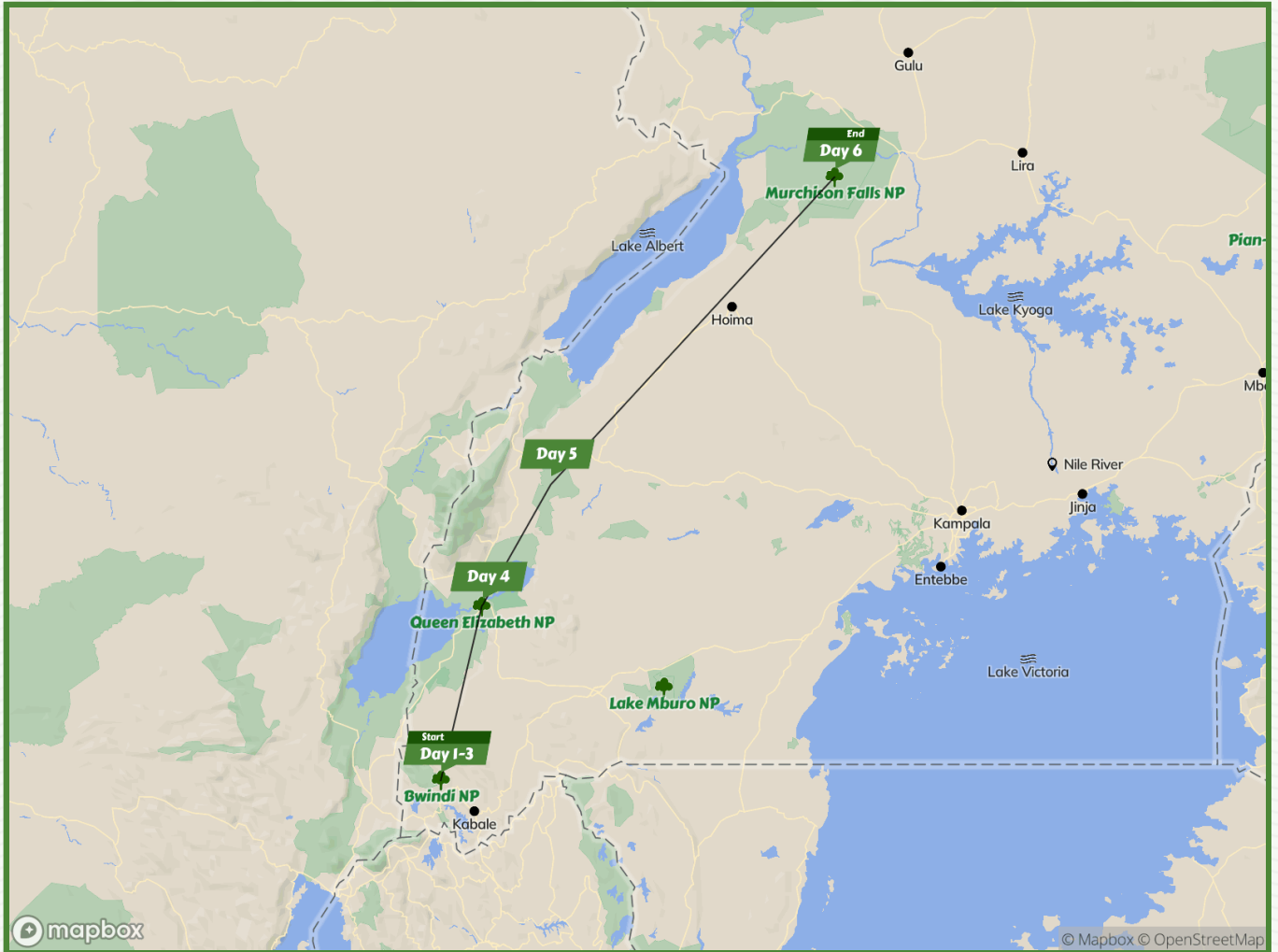
■ Bwindi Impenetrable National Park

■ Queen Elizabeth National Park

■ Murchison Falls National Park

■ Kibale National Park

# An overview of your trip



**Start Point** Bwindi Impenetrable National Park

**Day** Destination & Accommodation

- Day 1-2 **Bwindi Impenetrable NP** Gorilla Leisure Lodge
- Day 3 **Bwindi Impenetrable NP** Queen Elizabeth Safari Lodge
- Day 4 **Queen Elizabeth NP** The Bush Lodge (Banda)
- Day 5 **Kibale NP** Kibale Forest Lodge
- Day 6 **Murchison Falls NP** Murchison River Lodge

**End Point** Murchison Falls National Park

Day 1

# Bwindi Impenetrable National Park

Accommodation

**Gorilla Leisure Lodge**

Bordering without fences

**Bwindi Impenetrable National Park**

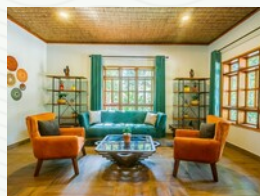
Your Ugandan safari starts here and now. With all of the incredible wildlife that this country has to offer, we know that you're keen to get started. And as soon as we introduce you to your guide and answer your questions, we'll get you out there exploring.

Prepare to be blown away by Bwindi Impenetrable National Park. Not only is this mountainous rainforest utterly gorgeous, but it has also been recognized as a Unesco World Heritage Site on account of its rich biodiversity and wealth of unique plants and animals. Bwindi is best known for supporting roughly 45% of the world's remaining mountain gorillas, but other wildlife includes the attractive L'Hoest's monkey, a small population of forest elephants, and a seriously impressive checklist of 350 bird species.

## Accommodation **Gorilla Leisure Lodge**

**Lodge** Bordering Bwindi Impenetrable National Park without fences

You're perfectly placed when you stay at Gorilla Leisure Lodge on your visit to Bwindi Impenetrable National Park.



## Activity Day 1

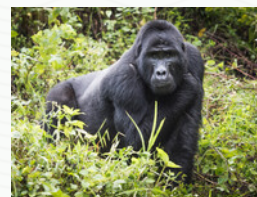
- Step into your Africa adventure. You arrive today.

### Meal Plan – Day 1

- Breakfast



Bwindi Impenetrable National Park





Day 2

# Bwindi Impenetrable National Park

Accommodation  
**Gorilla Leisure Lodge**

Bordering without fences  
**Bwindi Impenetrable National Park**

We return to the lushly forested landscapes of Bwindi Impenetrable National Park.

## Mountain Gorilla Trekking

When you go mountain gorilla trekking, you'll hike through the forest and then spend time in the presence of these remarkable and soulful family groups. The walking can be strenuous, but you'll never forget your experience here.

## Accommodation Gorilla Leisure Lodge

**Lodge** Bordering Bwindi Impenetrable National Park without fences

Stay for longer at Gorilla Leisure Lodge.



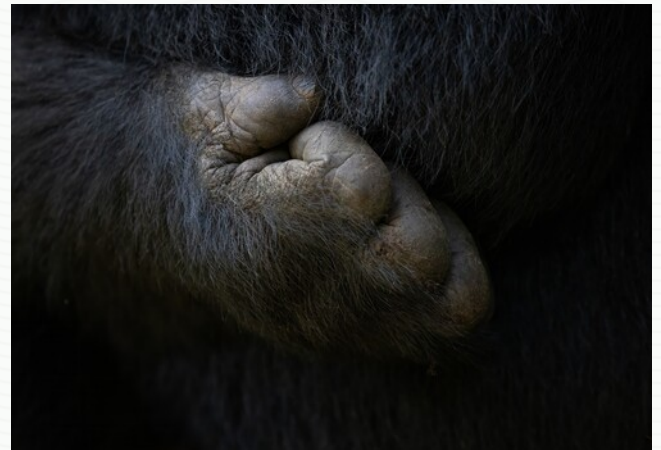
Gorilla Leisure Lodge

## Activity Day 2

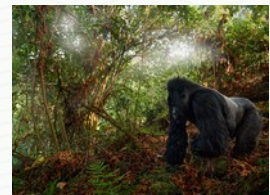
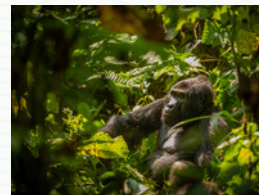
- Mountain Gorilla Trekking

## Meal Plan – Day 2

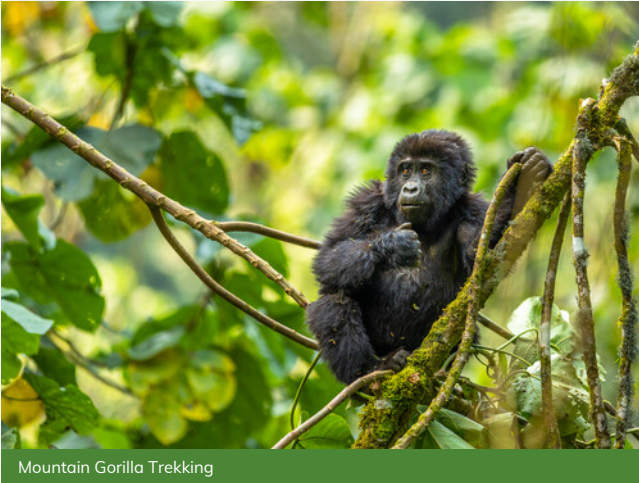
- Breakfast



Bwindi Impenetrable National Park



## Day 2





Day 3

# Bwindi Impenetrable National Park

Accommodation

**Queen Elizabeth Safari Lodge**

You get another chance to spend time in and around the magnificent Bwindi Impenetrable National Park.

### Evening Game Drive

Going on an evening game drive is one of the highlights of any safari. This is when temperatures cool, the light becomes softer and the wildlife begins to get active. Not only will you be out when the light is best for taking photos, but it's also one of the best times of day for seeing the animals.

### Accommodation Queen Elizabeth Safari Lodge

Lodge

When you stay at Queen Elizabeth Safari Lodge, you're in a good location to enjoy this leg of your trip.



Mountain Gorillas

### Activity Day 3

#### Evening

- Evening Game Drive

#### Meal Plan – Day 3

- Dinner



Bwindi Impenetrable National Park



Day 4

# Queen Elizabeth National Park

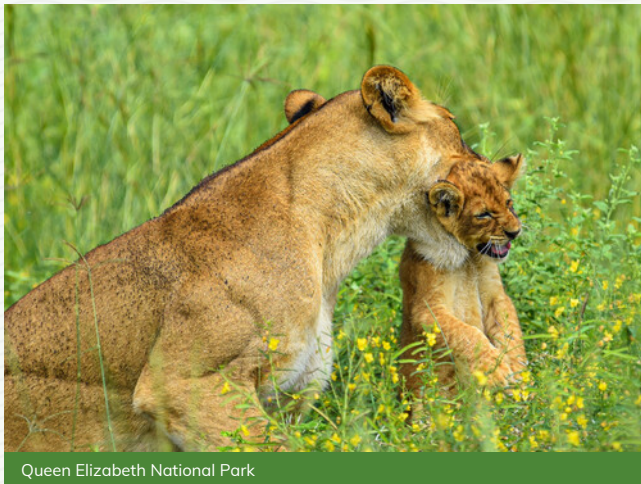
Accommodation  
**The Bush Lodge (Banda)**

Just outside  
**Queen Elizabeth National Park**

Time to get into safari mode as you enter Queen Elizabeth National Park, a savannah-dominated reserve known for its conspicuous populations of lion, elephant, buffalo and other iconic African creatures. There are also hippos on the pretty Kazinga Channel, a flat and narrow waterway that connects Lake Edward and Lake George within eyeshot of the snowcapped Rwenzori Mountains, as well as rainforests alive with chimps and monkeys, and crater lakes tinged pink by flocks of flamingo. Indeed, this is possibly the most biodiverse national park anywhere in East Africa.

### Chimp Trekking

The opportunity to see chimpanzees in the wild is one of the most memorable of all safari activities. Getting close to these creatures that share so much of our DNA is a once-in-a-lifetime experience, and the excitement of walking through the forest and knowing that they are close will stay with you forever.



Queen Elizabeth National Park

### Activity Day 4

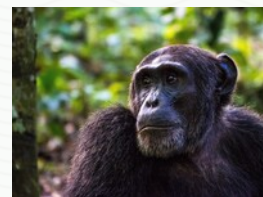
- Chimp Trekking

### Meal Plan – Day 4

- Breakfast



Queen Elizabeth National Park



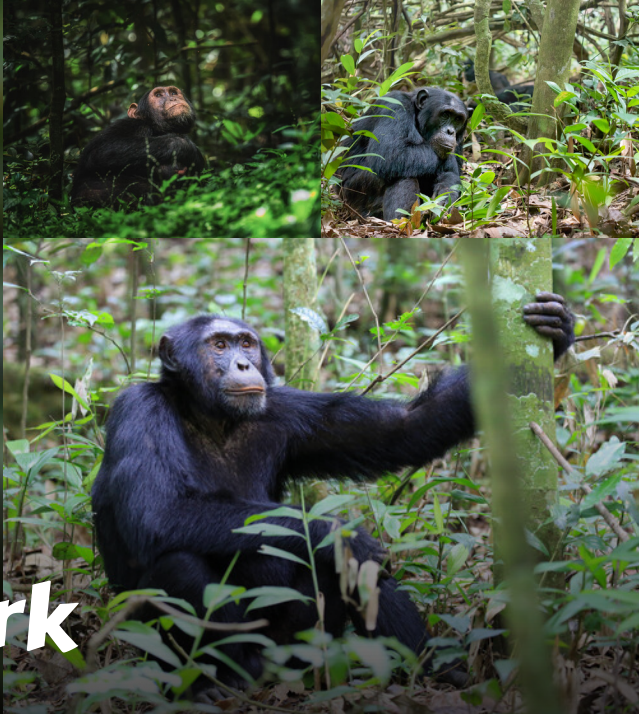
## Day 4

### Accommodation **The Bush Lodge (Banda)**

**Lodge** Just outside Queen Elizabeth National Park

True to its name, the Bush Lodge has a genuine wilderness feel thanks to its unspoiled location on the south bank of the Kazinga Channel facing Queen Elizabeth National Park. Grunting hippos and chattering birds are a permanent presence here, but other wildlife, including elephants and buffaloes, also passes through on a regular basis.





Day 5

# Kibale National Park

Accommodation  
**Kibale Forest Lodge**

Just outside  
**Kibale National Park**

Kibale National Park is best known for its population of around 1,000 chimpanzees, man's closest genetic relative. The park is home to a dozen other primate species, including Uganda mangabey, a type of monkey that is unique to Uganda and difficult to see anywhere other than Kibale. It supports a dazzling forest birdlife, with 370 species recorded, ranging from the outrageously colorful great blue turaco to the secretive green-breasted pitta.

### Murchison Falls National Park

Our next stop is Murchison Falls National Park. Bisected by the Nile and famed for the dynamic waterfall after which it is named, this is Uganda's largest conservation area and home to the likes of lion, leopard, elephant, buffalo, hippo, giraffe and 556 bird species.



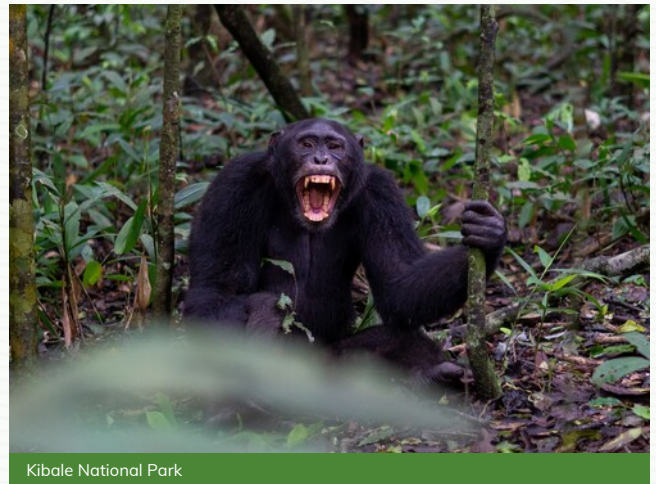
Kibale National Park

### Activity Day 5

- We join a boat trip on the Nile, gliding past hippos, a profusion of waterbirds, and wildlife coming to drink, before arriving at the base of the spectacular **Murchison Falls**.

### Meal Plan – Day 5

- Breakfast



Kibale National Park

## Day 5

### Accommodation **Kibale Forest Lodge**

**Lodge** Just outside Kibale National Park

We think you'll enjoy the down-to-earth feel of Kibale Forest Lodge, which stands in the village of Bigodi practically bordering Kibale National Park. Owned and managed by a local husband-and-wife team known for their expertise as bird guides, this welcoming place started life as a simple homestay but it has gradually evolved into a proper lodge whose en-suite rooms now all have king-size beds, fitted nets and private balconies.





Day 6

# Murchison Falls National Park

Accommodation  
**Murchison River Lodge**

Just outside  
**Murchison Falls National Park**

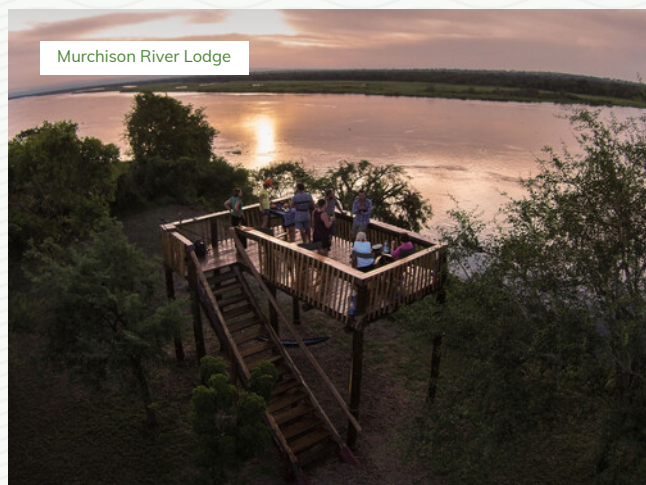
We return to Uganda's largest national park: Murchison Falls National Park.

As your safari in Uganda ends, it's time to look back on your trip with us and enjoy the incredible memories we're sure you have.

## Accommodation **Murchison River Lodge**

**Lodge** Just outside Murchison Falls National Park

Set on the south bank of the papyrus-fringed Nile as it flows through Murchison Falls National Park, Murchison River Lodge offers clean and comfortable accommodation in large grounds that retain plenty of natural woodland. View wildlife action along the Nile as you relax in the shady thatched restaurant, or enjoy a refreshing dip in the welcome swimming pool.



## Activity Day 6

- It is departure time.

### Meal Plan – Day 6

- Breakfast



Murchison Falls on the Victoria Nile



Pricing

# Proposal for Martha

Tour Length

6 Days

Travelers

...

## Included

- All activities, unless indicated as optional
- Meals (As specified in the day-by-day section)
- Taxes / VAT

## Excluded

- International flights
- Personal items (Souvenirs, travel insurance, visa fees, etc.)
- Tips (Tipping guideline US\$10.00 pp per day)
- Government imposed increase of taxes and/or park fees



# About Us

TsuTsu tours and travel

## Contact Us

Email [tsutsutours@gmail.com](mailto:tsutsutours@gmail.com)

Website [tsutsutours.com](http://tsutsutours.com)



**“Live life with no excuses,  
travel with no regret”**

Oscar Wilde

---

## Colofon

**Copyright Text** Tsutsutours and travel & SafariOffice

**Copyright Images** SafariBookings.com, Ariadne Van Zandbergen, USAID Biodiversity & Forestry, Tsutsutours and travel & SafariOffice  
[View](#) copyright per photographer

Mandela Salim from Tsutsutours and travel used the SafariOffice App to create this unique proposal especially for you.